

UGB-NET Gate Box with Integrated Safety Protocols (CIP Safety/PROFIsafe)

FEATURES & APPLICATION:



UGB-NET-PROFIsafe

UGB-NET-CIP



Integrated safety protocols for use with industry recognised industrial Ethernet networking capabilities. Ethernet/IP (CIP Safety) or PROFINET (PROFIsafe).

Application:

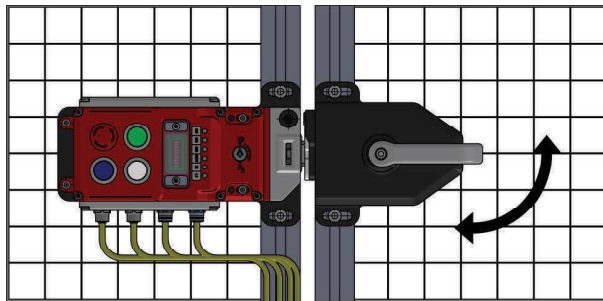
IDEM's Universal Gate Boxes (UGB-NET) provide high level RFID coded interlocking and machine control functions in one heavy duty housing. They can be easily fitted to access doors to provide guard locking, rear escape options and sliding or rotary handles. They reduce the risk of operators being trapped inside a guarded area.

They incorporate standard machine request or control buttons and indicator lamps in an all-in-one machine safety device.

Features:

- Choice of integrated Ethernet CIP Safety or PROFIsafe versions.
- Choice of pluggable connections for quick connection (M12 or 7/8")
- Network address assignment set by DIP switches for simple and easy set up.
- Compact housing – less than 250mm long (10 inches) and 115mm (4.5 inches).
- End or front actuator insertion for flexibility of mounting.
- Optional Rotary Front Handles and Rear Escape Handles.

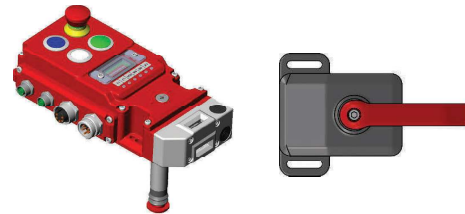
Shown below fitted to a Right Hand door with Front Rotary Handle.



Network address set by DIP switches

- The UGB-NET has both RFID guard interlocking technology and electronic lock monitoring technology using a traditional tongue and cam mechanism to hold the guard closed.
- Daisy chain power and network connections (in/out).
- Choice of standard machine function buttons/lamps or custom configurable (E Stops, Start, Stop, Indication).
- Easy to mount painted solid die-cast or Stainless Steel 316 housings.
- Holds guards closed and locked up to 3000N.
- RFID uniquely coded for high coding anti-tamper.

Shown below with optional Rotary Front Handle and Rear Escape Handle.



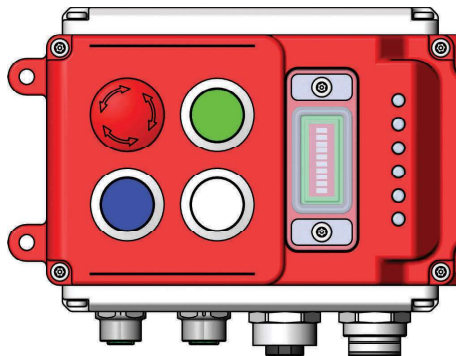
TECHNICAL SPECIFICATIONS:

Standards: ISO14119 EN60947-5-3
ISO13849-1 IEC62061

Safety Classification and Reliability Data:

Supply Voltage	24Vdc (+/- 10%) SELV/PELV	
Power Consumption	1A (max)	
Connector Option A	Data: 2 x M12	D Code 4 pin
	Power: 2 x M12	A Code 5 pin
Connector Option B	Data: 2 x M12	D Code 4 pin
	Power: 2 x 7/8"	5 pin
Safety Outputs	CIP Safety or PROFIsafe	
Performance Level Category	PLe/Cat4	
Rated Insulation Voltage	250V	
Holding Force (ISO14119)	F1Max 3000N Fzh 2307N	
Actuator insertion distance	5mm for assured locking	
Sao Sar (RFID sensing)	Sao 5mm Sar 20mm	
Operating Frequency	1Hz	
Body Material	Die-cast painted red or Stainless Steel 316	
Head/Actuator Material	Polished Stainless Steel 316	
Enclosure Protection	IP65	
Operating Temperature	-25C +40C	

E-Stop, Lamps & Illuminated Push Buttons (5 different lens colours offered)



LED diagnostic for ease of status

Choice of M12 or 7/8" quick disconnect (or customer specific)